



# An Introduction to Unithai Group

# Unithai Group

**Providing supply chain solutions to serve the region's economic growth and rapid industrialization.**

The Unithai Group is a regional organization, representing the Thai arm of the IMC Industrial Group, which has core interests in shipping, distribution, logistics, engineering and infrastructure development throughout Asia Pacific.

Since its establishment, Unithai Group has remained true to its original aim: to work towards the economic development of Thailand. This long journey began with the creation of United Thai Shipping Corp., Ltd. in 1976 as a national line linking Thailand and the West. As Thailand developed over the years, new challenges arose. In 1990, Unithai opened a major shipyard to serve the country's growing maritime sector. In the mid-90s, the group opened the only fully equipped private Chao Phraya River terminal to respond to a growing need for containerized freight transport and set up onshore and offshore logistics operations. In the new millennium, Unithai has diversified into serving the offshore oil and gas industry and established a shipbuilding unit, saving the country significant import costs.

Today, Unithai Group is a multi-faceted international organization with primary business interests in shipping, logistics, shipyard and offshore engineering operations, fully committed to the continued industrial, social and economic development of Thailand and the region.

Our concern for our community, motivation for performance and desire for growth are embodied in our core values, ensuring our sustainability.

## Spirit of the Unithai Logo



Unithai's logo – three seagulls in the colors of the Thai flag, flying in unison from east to west – symbolizes 'teamwork' and reflects origins rooted in the Thai government's vision for a national shipping line linking Thailand with Europe.

## Significant Milestones

- 1976 – United Thai Shipping Corp.,Ltd. established to serve the government's vision in founding a 'Thai National Flag Carrier'.
- 1987 – Unithai Line Plc.,Ltd. established to run liner trade linking Thailand to Western Europe, South and West Africa, the Middle East and North Asia.
- 1990 – Unithai Shipyard & Engineering Ltd. established at the Laem Chabang Deep Sea Port.
- 1994 – Unithai joint ventures with Sojitz Logistics Corporation and Maruzen Showa Unyu Co.,Ltd. to establish United Thai Logistics Co.,Ltd. and United Thai Warehouse Co.,Ltd.
- 1997 – Unithai Container Terminal established in Samut Prakarn Province and commenced operations in 1997.
- 1999 – Joined forces with SDV France to establish SDV Logistics (Thailand) Co.,Ltd. to provide International Freight Forwarding Service.
  - Uniwise Offshore Ltd. created by joint venture with the Denmark-based CUIG (SvitzerWijismuller A.P. Moller Group), to provide crew boat services to the oil and gas industry in Thailand.
- 2000 – Unithai's Offshore Division, through CUEL, established to provide a complete range of services for offshore facilities.
- 2006 – Uniwise Offshore splits into two joint ventures
  - Uniwise Towage Ltd. is a joint venture with Wijismuller Marine Services, operating Multi-Purpose Offshore Terminal Tugs (MOTT) and a utility line boat.
  - Uniwise Offshore is a joint venture with Express Offshore Transport, operating Thailand's largest crew boat fleet.
- 2008 – Unithai formed a joint venture with Maruzen Showa Unyu, Tan Cang – Song Than ICD Ltd, Transport and Chartering Corporation and Viet Business to establish Unithai Logistics (Vietnam) Corp, in Ho Chi Minh City
- 2011 – Uniwise Offshore is the first contractor to provide AHTS to Chevron
- 2014 – Unithai formed a joint venture with Chin Corp Myanmar to establish Unithai Chin Corp Logistics (Myanmar) Limited.
- 2019 – United Waste Management (UWM) is a subsidiary of Unithai Shipyard & Engineering Limited, established in Sep 2019 to provide dismantling and decommissioning services

# Shipyard & Engineering

## Thailand's largest shipyard

Represented by Unithai Shipyard & Engineering Limited, Unithai operates the largest shipyard in Thailand. The 693,000 square metre site is located in the deep-sea port of Laem Chabang on the Eastern Seaboard of the Gulf of Thailand.

Unithai Shipyard exists to provide quality ship repair, modification, conversion, shipbuilding and offshore fabrication services to shipowners worldwide. Unithai works closely and in partnership with owners to determine their needs and to satisfy their requirements on safety, quality and time at competitive costs.

## Ship Repair

The shipyard can accommodate vessels of up to 180,000 dwt with a 580-meter quay and pier, two floating docks, and workshop areas for ship repair and steel fabrication.



Floating docks	Unithai 2	Unithai 3
Lifting Capacity	13,500 tons	48,000 tons
Length	191 m	300 m
Clear width	34 m	52 m
Max. depth over blocks	7 m	8 m

Unithai Shipyard can provide a complete range of ship repair services with excellent quality performances in mechanical and electrical repair work plus in-house facilities for BWMS retrofit, reconditioning services for main engine components, shaft alignment, ultrasonic cleaning tank, etc.

## Marine Offshore and Onshore Service

With its highly skilled workforce and professional project teams, Unithai Shipyard and Engineering Ltd has greatly expanded the scope of its business, the focus shifting from ship-repair services inside the yard to providing a wide range of marine and offshore repair and maintenance services far beyond.

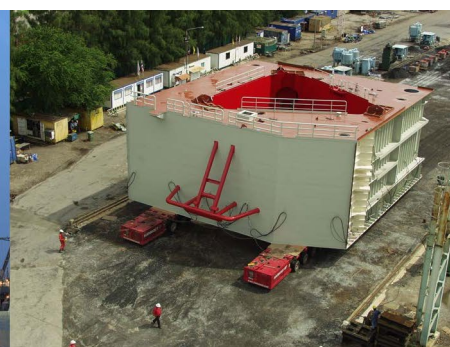
As a result of years of intensive experience, Unithai can now guarantee its clients high-quality services at every level of the industry. It has also been recognised by appreciative clients worldwide for its exceptional work-safety record.

These high-standard work-safety programmes and practices are both mandatory and in full compliance with the standards established by major oil and gas companies and owners and our naval clients. In maintaining such a lofty level, Unithai has been able to successfully deliver top-quality service for:

– FSO/FPSO, oil and gas platforms, jack-up rig maintenance, repairs and upgrades – Repair, maintenance and logistics support for commercial vessels calling at local ports and anchorage areas



[www.unithai.com](http://www.unithai.com)



# Offshore Construction

**Best in class integrated service provider, from engineering through construction, installation and commissioning**

Unithai's Offshore Division is represented by CUEL Limited, an EPCI specialist, offering international companies a unique range of construction related services. Originally formed in 2000, CUEL provides a world-class integrated service that encompasses project management, conceptual to detailed engineering design, procurement, construction, installation and commissioning.

With its innovative cost solutions, CUEL in its short history has already developed an extensive track record for Oil & Gas in the Southeast Asia region. Operating as a turnkey contractor, CUEL is delivering an extensive range of offshore facilities for its customers in the Gulf of Thailand as well as within other strategic locations in the Asia-Pacific region.

Apart from Oil & Gas, CUEL also provides the services to Refining / Petrochemical / LNG as well as Renewables-Offshore Wind sectors. The success of previous project delivery has significantly proven the capability of the company.

CUEL achieves its success with a best practice approach to safety, quality and environment. We have a clear capability to understand clients' expectations, primarily due to our unique business model that integrates expertise from clients and contractors perspective.

CUEL's construction facilities at Laem Chabang in Thailand significantly contribute to the Kingdoms growing capability to support both the domestic and international industries in Oil & Gas, Refining / Petrochemical / LNG, and Renewables-Offshore Wind.

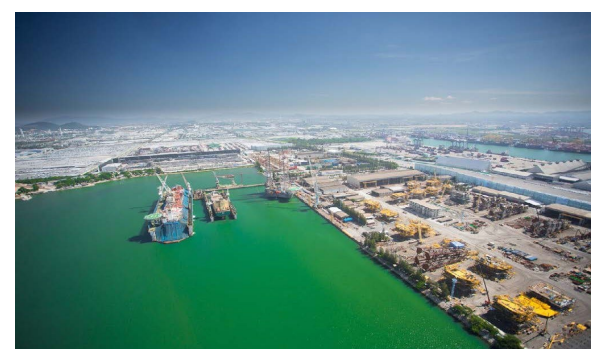
Today, CUEL is ready to offer its experience, proven record and industry technology to drive development costs down.

## Services:

- Project Management
- Front End Engineering
- Detailed Engineering
- Procurement and Logistics
- Fabrication and Construction
- Offshore Installation
- Hook-up and Commissioning

## Products:

- Wellhead Platform
- Process Platform
- Living Quarter
- Flare / Bridge
- Subsea Pipeline
- Subsea Facility
- Onshore / Offshore Module
- Offshore Wind Transition Piece
- Offshore Wind Jacket
- Offshore Substation



# United Waste Management (UWM)

## One of the most advance decommissioning factory in Southeast Asia

United Waste Management Company Limited (UWM) is one of the most advance decommissioning factory in Southeast Asia. UWM is a subsidiary of Unithai Shipyard & Engineering Limited with business focus on supporting and providing dismantling & decommissioning services on Wellhead Platforms and Jackets supporting oil and gas industry of Thailand.

The company locates within the area of Unithai Shipyard & Engineering Limited, Sriracha District, Chonburi Province with a factory area of 10,750 square meters. The main facilities consist of 2 sorting plants with the capability to support 2 wellhead platforms and jackets at a time with an annual capacity to support on average 6-8 platforms.

United Waste Management is set up with an aim to be the leader in the area of decommissioning with advance facilities that can provide the best services to clients safely and to ensure the highest standard and practices with utmost care for the environment.

United Waste Management focuses on safe operations and environmental care as our top priorities in order to ensure successful delivery and project execution. Our teams have wide-range experiences and are regularly trained to carry out the full scope of services. We also work closely with leading private sectors such as synergy energy company and government sectors such as Center of Excellence on Hazardous Substance Management, Center of Excellence on Petrochemical and Material Technology PETROMAT including leading oversea University to continuously develop our capability.



The facilities and equipment have been well designed and selected to ensure the safety standard and methodology for the operations. The current facilities include a 400-sqm decanting room, a 620-sqm storage for hazardous and non-hazardous materials, a 600-sqm scrap yard, 5,000-sqm laydown areas, and mercury environmental prevention system and two waste water tanks, to ensure safe and hazardous-free workplace and environment and also with utmost care for the neighboring communities well-being

United Waste Management currently are capable to accommodate an annual capacity 6-8 wellhead platforms, partnering with leading professional firms for offshore services and disposal companies for complete hazardous material management and steel scrapping.

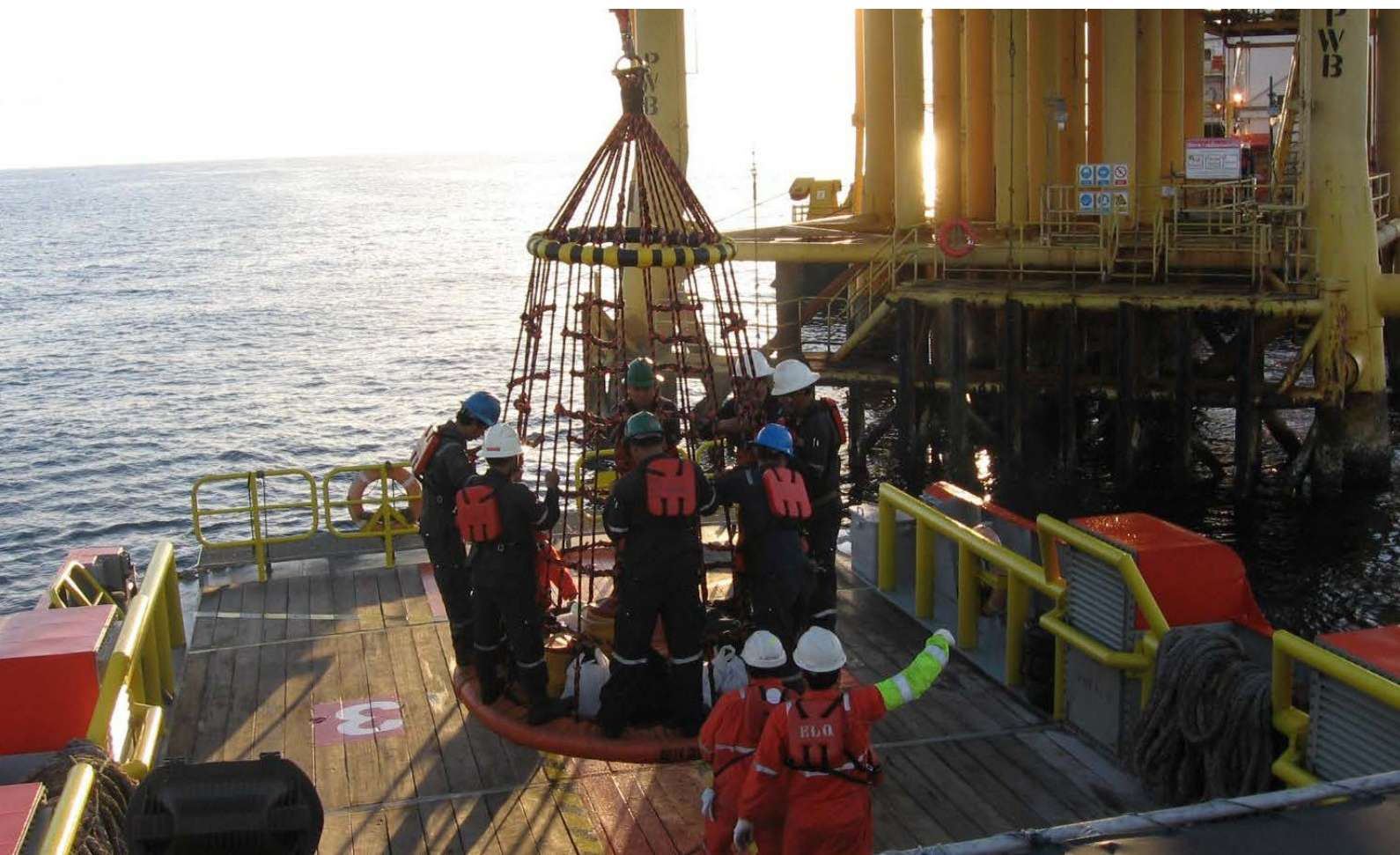
UWM's core values are aligned with Unithai Group of Companies' core values focusing on sustainable business development, community development, and environmental care to maximize benefits to customers, communities and stakeholders."



# Marine Offshore Logistics

## Marine Offshore Logistics Thailand's Leading Provider of Offshore Logistics

Established in 2000, Uniwise has steadily expanded our fleet to become the largest offshore support vessel operator in the Gulf of Thailand. Our fleet comprises 27 vessels and most of them are Thai flagged. We offer full range of vessels such as crew boat, AHT/utility, AHTS and PSV to serve various needs of the oil & gas industry. The large scale of our operation has enabled us to build up full-fledged shore support facilities such as maintenance work-shop, spare part warehouse and training center. Our bases in Songkhla and Sattahip provide key support functions such as vessel maintenance and repair, engine over-haul, crew change, spare part management and rigorous safety & operation excellence training. Thus, we are able to provide very high service reliability to meet our clients' requirement.



Over the years, we have invested, trained and built up a large pool of competent Thai seamen to keep up with growth of our fleet. Our competency development program is very comprehensive. It comprises both class room and practical training to equip the crew with all necessary skill to work efficiently and safely offshore.



Safety is our first priority. The company's leadership has total commitment to make our operation incident and injury free. Staff at all levels fully participates in safety program to ensure that our safety standard will consistently meet stringent requirement of oil and gas industry.



# Shipping Agency

To provide high-quality shipping agency services to the customers

Unithai Shipping Agency operated by United Thai Shipping Corporation Limited (UTSC), to offer a full range of agency services as the representative of a group of first-class international shipping companies.

## Services

### Full agency services

- Cargo Canvassing / Booking Services
- Port Formalities
- Ship Chartering & Cargo Broking.
- NVOCC / Cargo Tracking Note.
- Crew Change – Sign on/Sign off
- Clearing Ship's Spare and Transhipment Cargo
- Cash to Master Delivery
- Bunkering
- Stevedoring and Lighterage
- Dry-Docking
- Thai Government Project Logistics

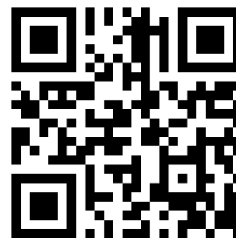
## Our Main Principals

### Conventional & Chemical tanker trade

- Sun United Management Pty Ltd
- Wan Bong Chartering Co Ltd
- IMC Shipping
- Aurora Tanker
- CSIC- IMC Shipping

## Shipping Schedules

View Shipping Schedules : [www.unithai.com](http://www.unithai.com)



Conventional / Break Bulk

Bangkok -South Africa ①

Bangkok -West Africa ②





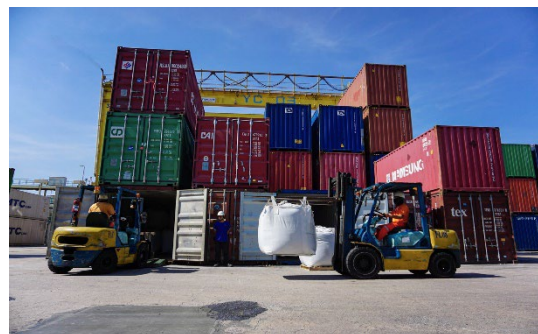
# Container Terminal

## One – stop – services : Fast, convenience and cost saving

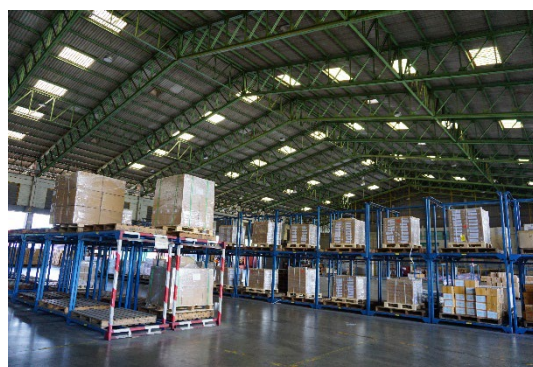
Unithai Container Terminal was established in 1997 and fully accredited the ISO 9001 standard in 2015 and compliance with ISPS code.

Unithai Container Terminal is strategically located in a highly industrialized area in Samutprakarn province, east of Bangkok. It is not only a purposely-built private container terminal on the Chao Phraya river but is also equipped with the most modern handling equipment. The terminal is designed by an internationally renowned consultant to provide the highest operational efficiency for shipping lines, shippers and consignees.

A fully computerised Port Management System tracks containers from the moment they enter the terminal until they leave, ensuring fast container turnaround and efficient document processing.

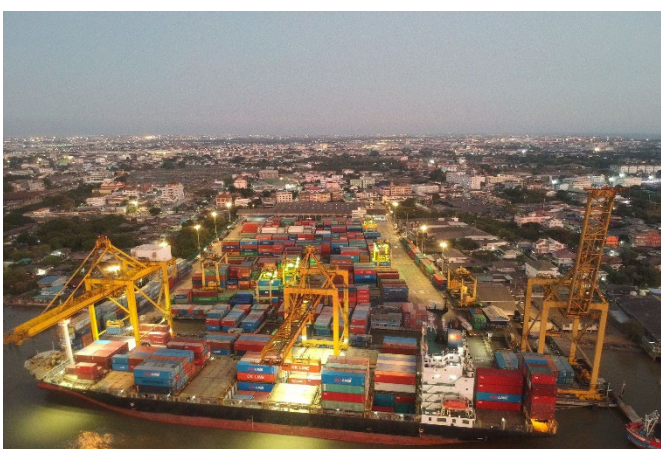


On-site container stuffing and unstuffing (packing and unpacking) provide flexibility to distribution options. Under-roof export CFS loading bay permits work under all-weather condition.



4,000 sqm import customs warehouse space designed to all easy identification and fast delivery

# Services



Higher Container loading/discharging rates through better handling equipment 3x35-tons quay cranes and specially well trained equipment operators with productivity of 25 moves/hour/crane ensures punctual vessel schedule.



Prompt on-site full-time with service - mind customs official, customs clearance is fast and straight forward.



# Freight Forwarding and Custom Clearance Warehousing, Transportation & Distribution

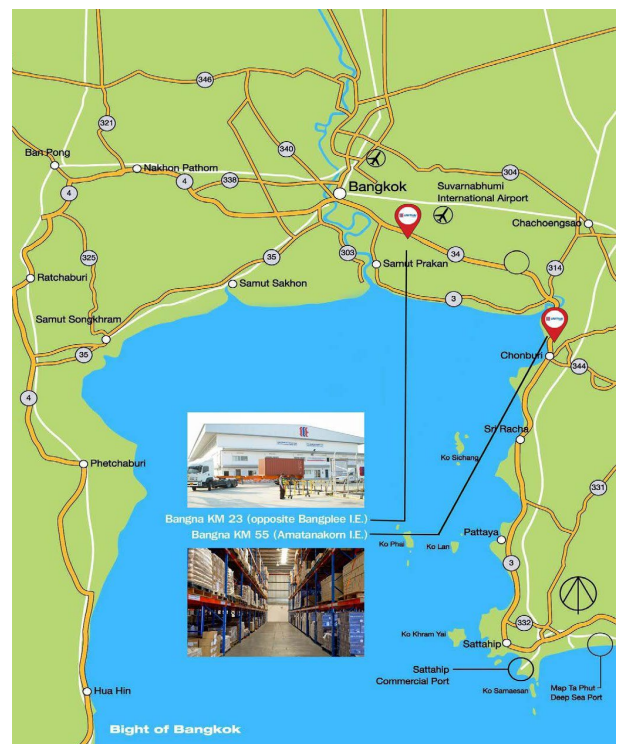
**One-stop integrated supply-chain service, for clients' logistics and warehouse needs in Thailand and in Asean**

A member of the Unithai Group of companies, Thailand's leading industrial supply chain solution provider with established network and expertise in shipping and logistics provide a wide range of international freight-forwarding, customs clearance services, warehousing, transport & distribution for clients' logistics and warehouse needs in Thailand and ASEAN.

The company operates two distribution centres, covering general and free zone warehouse services located at :

- Bangna Trad KM 23 (Opposite Bangplee I.E.)
- Bangna Trad KM 55 (Amatanakorn I.E.)

Unithai Warehouse has received awards of appreciation from major clients in recognition of its operations team providing excellent services, assuring that all cargo is protected and safe. In addition, Unithai warehouse has been accredited as a "five-star warehouse" by Ministry of Commerce to certify that its facilities meet high quality standard, covering process control and the protection of goods in a hygienic and safe environment, ensuring that customer requirements are fulfilled.



## Services

- International freight forwarding
- Project cargo handling and logistics solution
- Cross border (Thai-Cambodia-Laos-Myanmar-Singapore-Malaysia-China)
- Offer consolidated services by air, sea and land transport, ensuring cost-effectiveness
- Customs inspection and clearance for import and export goods (sea, air and truck)
- 2 warehouse locations in strategic Bangna-Trad corridor mid way between Laem Chabang and Bangkok ports, close to Suvarnabhumi International Airport, and near to major industrial estates
- WMS with easily assessed online inventory report and user-friendly functions
- Value Added (Sorting/Pick/Pack/Kitting/Labeling/ Re-Packing)
- High frequency in-land transportation. Various sizes of trucks and vans to suit customers' needs



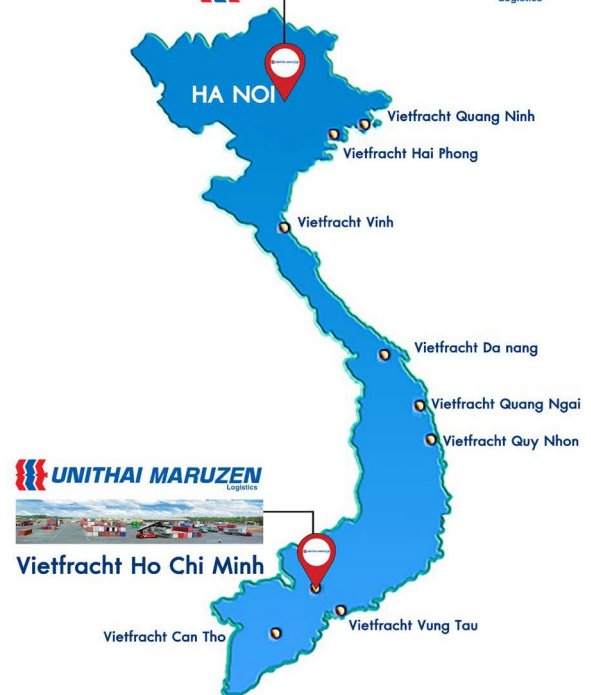
## Unithai Maruzen Logistics (Vietnam)

In 2008 Unithai formed a joint venture with Maruzen Showa Unyu, Tan Cang-Song Than ICD Co.,Ltd, Vietfracht to establish Unithai Maruzen Logistics (Vietnam) Corp in Ho Chi Minh City.

Unithai Maruzen Logistics (Vietnam) provides space in bonded warehouses and CFS and depot facilities for a number of shipping lines.

## Services

- General and Bonded warehouse, Tan Cang – Song Than ICD
- Inland transportation and trucking (door to door)
- Just In Time, Stock Control, Pick & Pack
- Cross Border Thailand, Laos, Cambodia, Vietnam
- Consolidation & Customs Clearances Services
- WMS support for logistics solutions to suite customer requirements
- Project installation and transportation



## Contact

Unithai Maruzen Logistics (Vietnam) Corporation

6<sup>th</sup> Floor, 16-18 Nguyen Cong Tru, District 1, Ho Chi Minh City, Vietnam

Email [kato@unithai.com.vn](mailto:kato@unithai.com.vn)

Tel +8428 3914 6849

Fax +8428 3821 2060



# Organizational Culture and People

## To be a purpose-driven systematic future-fit organization

Unithai Group believe that our people are the key success factor of our businesses and value family members of Unithai Group. We emphasize to provide the safety and healthy workplace to our people since company is established in Thailand in 1976 meanwhile we sustain the environment in all aspects at our operations areas through our CHES (Community, Health, Environment, Safety and Security) from parent company (IMC Industrial Group) and implement our local programs i.e. Anti Drug Program.

In July 2018, we have introduced Appreciative Inquiry (AI) Philosophy to our people and provided the organizational culture development program with core values in June 2019 . Our objective is to ingrain core values in our business and the way we are working together in Unithai Group. AI is about the search for the best in people, our organization and our strengths-filled, opportunity-rich world around us.

As the Group continues to grow, we also provides many training programs to develop our people on their managerial and functional competencies that we have a capable and efficient staff and leaders to oversee and lead our continued sustainable growth in this digital transformation era. One of the main leadership program is about “Quantum Leadership” that our chairman and IMC Industrial Group support on this program and knowledge sharing.

We are a people-focused organization that our employee have many types of welfares and benefits for themselves and their family members.

Thus, Unithai employee could have “well being” in their work life and living, they could be the valuable member of our society in Thailand.



# Corporate Social Responsibilities and Sustainability

At Unithai Group, we believe that businesses with a strong corporate social responsibility (CSR) initiative can drive performance, boost retention and recruitment rates. It involves all of us being accountable for our activities and practices that affect the community, environment and society in general.

We are committed to conduct our businesses based on the principles of sustainable development, as part of our corporate strategy, which aims at accelerating business growth while fostering economic, social, and environmental sustainability, wherever we operate.

Since the company's inception, our founder had cultivated a spirit of corporate social responsibility among all the employees. This was the inspiration behind Unithai Group's initiation and implementation of numerous corporate social responsibilities projects.



## Sustainability

Many of these initiative projects are recognized and received tremendous support from surrounding communities, key stakeholders and Unithai's employees focusing on these 3 key areas:

- Community Relations
- People Development
- Environmental Cares and Improvement

Our philosophy of sustainability underpins our Mission "To serve human well-being and create wealth at the same time".

Unithai Group has increasingly incorporated the principles of sustainable development into our operations in line with the corporate mission – to enhance efficiency in the implementation of sustainable development, and to integrate sustainable development throughout the value chain of our businesses. Our concern for our community, motivation for performance and desire for growth is embodied in our 6 Core Values, ensures our sustainability.

- COLLABORATION
- ADD VALUE
- MINDFULNESS
- STEWARDSHIP
- STRATEGIC MINDSET
- CREATIVITY

# Our Contact



## Corporate Office

25 Alma Link Building, 11th Floor, Soi Chitlom,  
Phloenchit Road, Lumpini, Pathumwan,  
Bangkok 10330 Thailand

Tel : +66 (0) 2254 8400

Fax : +66 (0) 2255 1155

+66 (0) 2254 8424

E-mail: [corpcomm@unithai.com](mailto:corpcomm@unithai.com)



Unithai Shipyards & Engineering Limited

## Laem Chabang Port Industrial Estates

48 Moo 3 Tambon Tungsukhla, Sriracha District,  
Chonburi 20230, Thailand

Tel : +66 (0) 3840 7000

Fax : +66 (0) 3840 7006

E-mail: [shipyard.mktg@unithai.com](mailto:shipyard.mktg@unithai.com)



CUEL Limited

## BANGKOK HEAD OFFICE

18 SCB Park Plaza Tower II (West), 9th Floor,  
Ratchadapisek Road, Chatuchak,  
Bangkok 10900 Thailand

Tel : +66 (0) 2500 1200

Fax : +66 (0) 2500 1201

E-mail: [thongchaim@cuel.co.th](mailto:thongchaim@cuel.co.th)  
[pattiras@cuel.co.th](mailto:pattiras@cuel.co.th)

## LAEM CHABANG YARD

48 Moo 3 Tambon Tungsukhla, Sriracha District,  
Chonburi 20230 Thailand

Tel : +66 (0) 3840 7000

Fax : +66 (0) 3840 7018



Uniwis Offshore Limited

25 Alma Link Building, 11th Floor, Soi Chitlom,  
Phloenchit Road, Lumpini, Pathumwan,  
Bangkok 10330 Thailand

Tel : +66 (0) 2255 7060 -2

Fax : +66 (0) 2655 6763

E-mail: [enquiry@uniwise.co.th](mailto:enquiry@uniwise.co.th)



United Thai Shipping Corporation Limited

25 Alma Link Building, 11th Floor, Soi Chitlom,  
Phloenchit Road, Lumpini, Pathumwan,  
Bangkok 10330 Thailand

Tel : +66 (0) 2254 8400

Fax : +66 (0) 2255 1155

+66 (0) 2254 8424

E-mail: [shipping.agency@unithai.com](mailto:shipping.agency@unithai.com)



United Thai Logistics Company Limited

United Thai Warehouse Company Limited

25 Alma Link Building, 11th Floor, Soi Chitlom,  
Phloenchit Road, Lumpini, Pathumwan,  
Bangkok 10330 Thailand

Tel : +66 (0) 2253 1652-4

Fax : +66 (0) 2254 8420

E-mail: [logistics.mktg@unithai.com](mailto:logistics.mktg@unithai.com)



United Thai Shipping Corporation Limited

(Unithai Container Terminal)

498/1 Taiban Road, Tambon Paknam, A. Muang  
Samutprakarn, Samutprakarn 10270 Thailand

Tel : +66 (0) 2755 6888

Fax : +66 (0) 2701 7309-10

E-mail: [utct.mktg@unithai.com](mailto:utct.mktg@unithai.com)



Unithai Maruzen Logistics (Vietnam) Corporation

6th Floor, 16-18 Nguyen Cong Tru, District 1,  
Ho Chi Minh City, Vietnam

Tel : +8428 3914 6849

Fax : +8428 3821 2060

E-mail: [kato@unithai.com.vn](mailto:kato@unithai.com.vn)



[www.unithai.com](http://www.unithai.com)